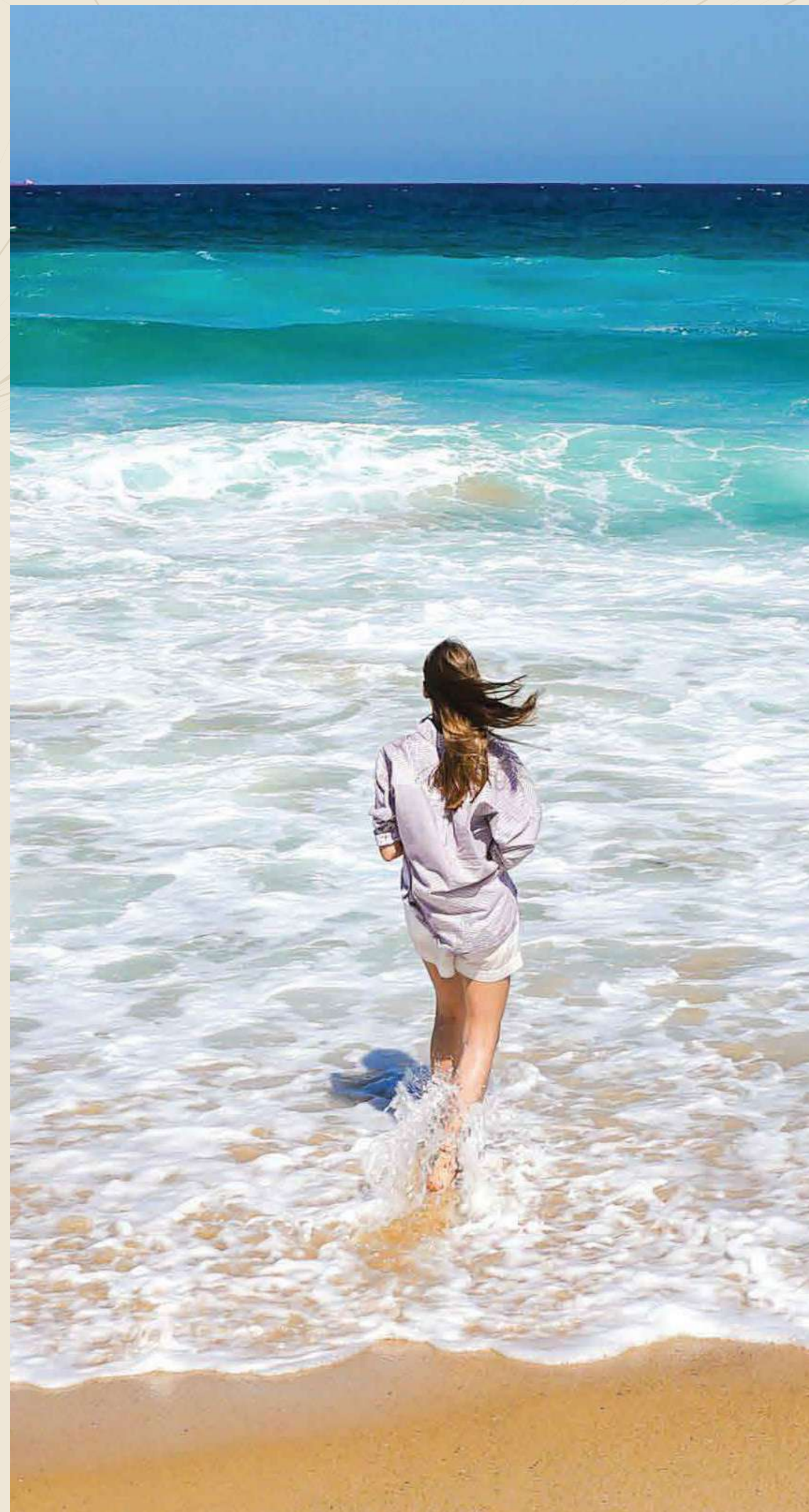


# Mackerel Tower

BY TARRAD  
DEVELOPMENT







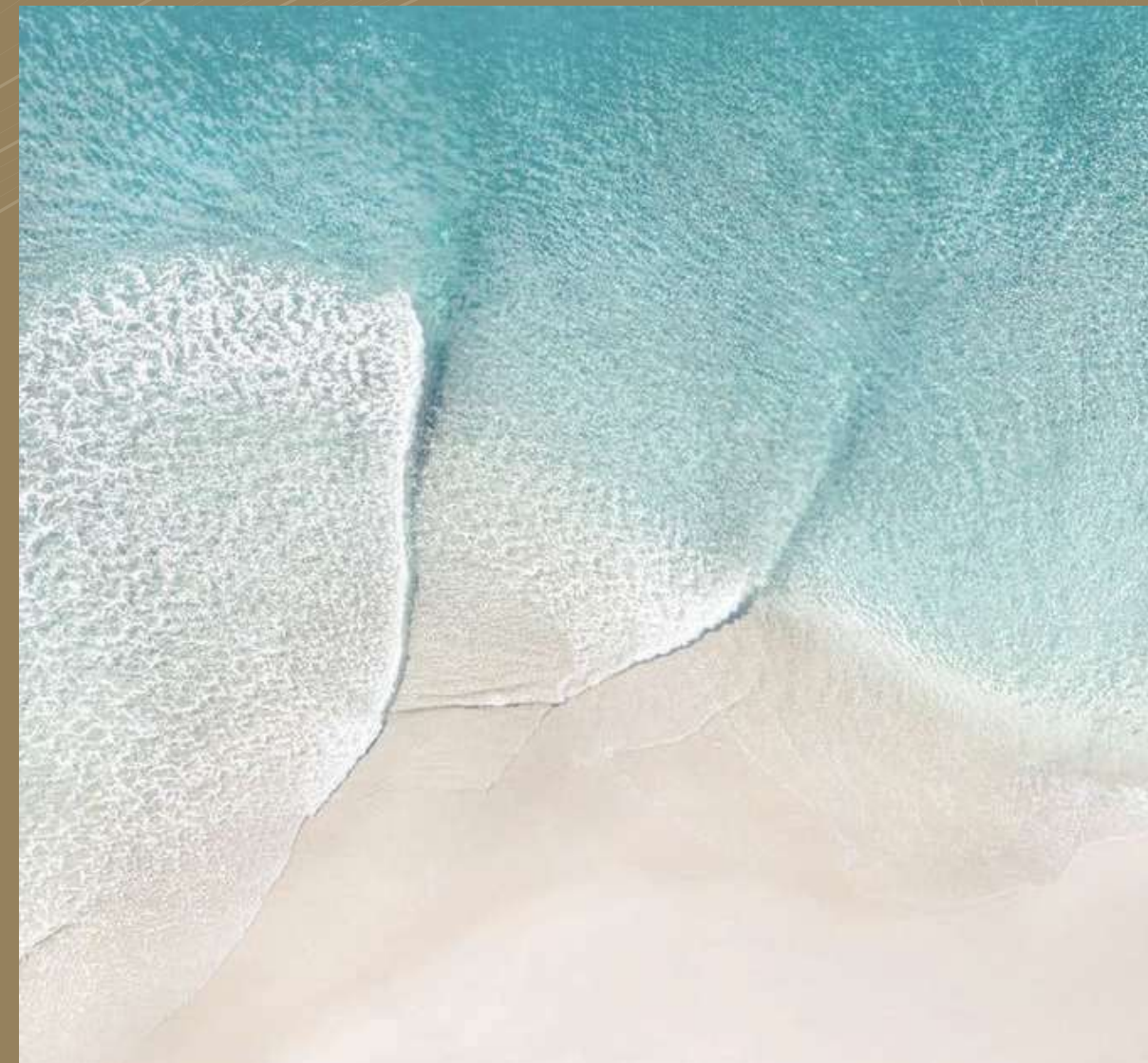
**MACKEREL TOWER DUBAI ISLANDS IS MUCH  
MORE THAN A HOME ,  
IT EMBODIES CONTEMPORARY  
WATERFRONT LIVING**

**SEA & SUN  
DRAW YOUR  
DREAMS**



# EXPERIENCE LUXURY BEACHFRONT LIVING

WITH THE CITY AT YOUR DOORSTEP  
IN THIS FAMILY-FRIENDLY NEIGHBOURHOOD







TARRAD



## WELCOME HOME

### LIVE AN UNPARALLELED WATERFRONT LIFESTYLE AT THIS PRESTIGIOUS ADDRESS

This contemporary landscaped residential development boasts **beautiful Residences of apartment typologies**, and an extensive array of enviable amenities dedicated to the Residence owners, **including stunning pools**, lush green garden terraces, and a pristine beachfront.

**Residents will enjoy a world of wellness activities and water sports combined with the services of the allexclusive in a friendly Resortstyle Neighbourhood.**  
**With Fully Furnished Apartment, Siemens Kitchen Appliances.**





# LUXURY APARTMENTS ON MACKEREL TOWER RESIDENCE

MACKEREL TOWER RESIDENCE SMOOTH  
EDGES OF DESIGN,  
NEW MEANING TO FEEL THE  
COMFORT IN AND OUTSIDE YOUR  
SPACE. TARRAD DEVELOPMENT  
CARES ABOUT YOUR DREAMS.





# LIVE ON ISLAND LIFE

## Mackerel Tower

BY TARRAD  
DEVELOPMENT





ON MACKEREL TOWER RESIDENCE

## Where Life Flows

Dubai Islands connect five islands where waterfront living meets Arabian splendour. Redefining the horizon of Dubai, this destination is set to be a kilometres of 60 masterpiece with over kilometres of 20 waterfront and over beaches, including a Blue Flag-certified beach, almost two kilometres of parks, open spaces and premium golf courses overlooking the Arabian Gulf.





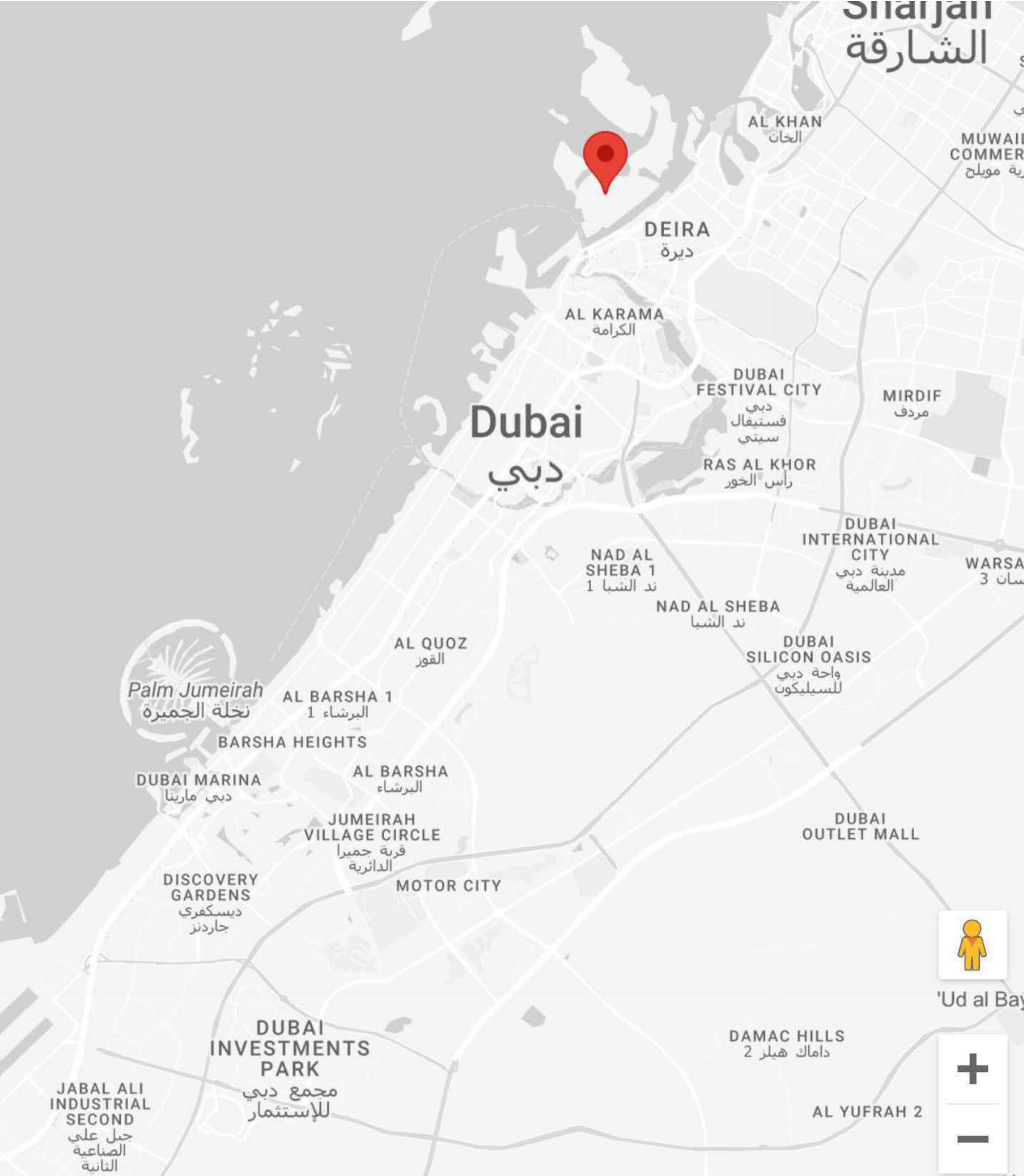
## DUBAI ISLANDS - A

- |   |   |
|---|---|
|  | BEACH RESORT (HOTEL)                                    |
|  | WATER EDGE (HOTEL)                                      |
|  | HOTEL   |
|  | RESIDENTIAL (APARTMENT)                                 |
|  | MIXED USE (RESIDENTIAL WITH RETAIL)                     |
|  | MIXED USE (RESIDENTIAL - RETAIL - HOTEL)                |
|  | MIXED USE (RESIDENTIAL - COMMERCIAL - HOTEL)            |
|  | RESIDENTIAL - RETAIL - OFFICE                           |
|  | MALL / SHOPPING CENTRE / ENTERTAINMENT                  |
|  | COMMUNITY (MASJID)                                      |
|  | EDUCATION (SCHOOL)                                      |
|  | COMMUNITY FACILITIES (POLICE, CIVIL DEFENSE, AMBULANCE) |
|  | COMMUNITY (HOSPITAL)                                    |
|  | COMMUNITY (MARINA FACILITIES)                           |
|  | COMMUNITY FACILITIES (BOARDWALK)                        |
|  | COMMUNITY FACILITIES (BEACH)                            |
|  | ROCK EDGE   |
|  | PETROL STATION  |
|  | CAR PARKING   |
|  | OPEN SPACE / PARKS                                      |
|  | UTILITY   |
|  | FUTURE MIXED USE DEVELOPMENT                            |

-  MARINA
-  BEACH FRONT HOTEL/RESORT
-  BEACH
-  MARINA HOTELS & APARTMENTS
-  MALL AND ENTERTAINMENT
-  LUXURY LIVING
-  SCHOOL
-  HOSPITAL
-  MOSQUE
-  PETROL STATION
-  SUBSTATION
-  DISTRICT COOLING (FOR ENTERTAINMENT DISTRICT)
-  PUMP STATION







## The Location



10 minutes from Gold Souq Metro Station



14 minutes from Dubai International Airport



22 minutes from The Dubai Frame



24 minutes from Dubai World Trade Centre



24 minutes from Downtown Dubai



26 minutes from Business Bay



# DISCOVER THE BEACH walk

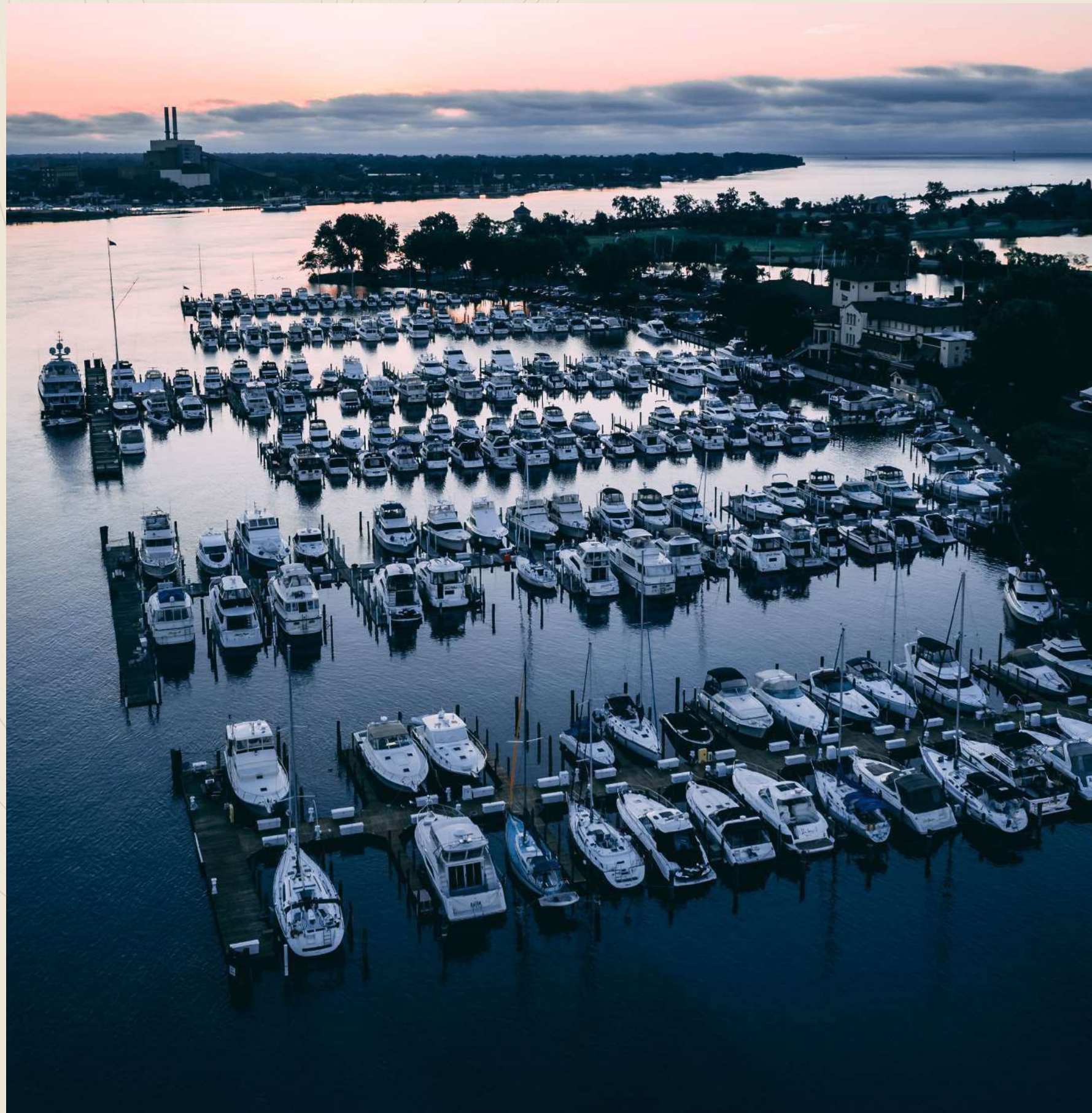
Not everyone can claim the ocean breeze as their morning alarm. A beachfront residence at Beach Mackerel Tower offers a unique privilege, allowing you to begin each day with the calming presence of the sea just steps from your door. Picture yourself lounging by the pool, soaking in the golden rays, or unwinding in the dreamy cabanas, diving into pristine pools, or basking on sunbeds - they are all elements of an idyllic escape, conveniently located within your private haven.





## luxurious and exclusive lifestyle

Imagine two championship-caliber golf courses nestled along the pristine beaches of Dubai Islands. The courses would offer stunning amazing panoramic views, creating a serene and luxurious golfing experience.



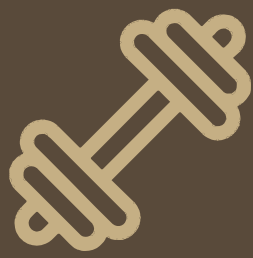
Dubai Island offers a prime location for yacht clubs, combining stunning waterfront views with world-class amenities.



# RESIDENTIAL AMENITIES



FAMILY  
SWIMMING  
POOL



FULLY  
EQUIPPED  
GYM



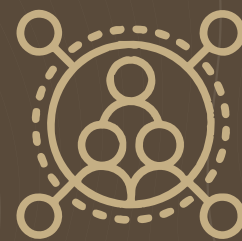
ZEN  
GARDEN



BBQ  
AREA



OUTDOOR  
YOGA  
RETREAT



CLUB  
ROOM



EXTRA  
VISITOR  
PARKING



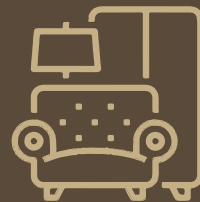
ROOFTOP  
GARDEN



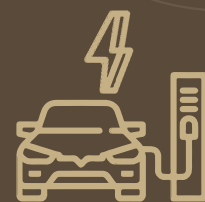
KIDS  
PLAY AREA



WALK  
TO THE BEACH



FULLY  
FURNISHED



RECHARGE  
STATION



INFINITY  
POOL



RUNNING  
TRACKS





MAIN LOBBY





MAIN LOBBY



TARRAD  
Development

MAIN LOBBY





LIVING ROOM





BEDROOM





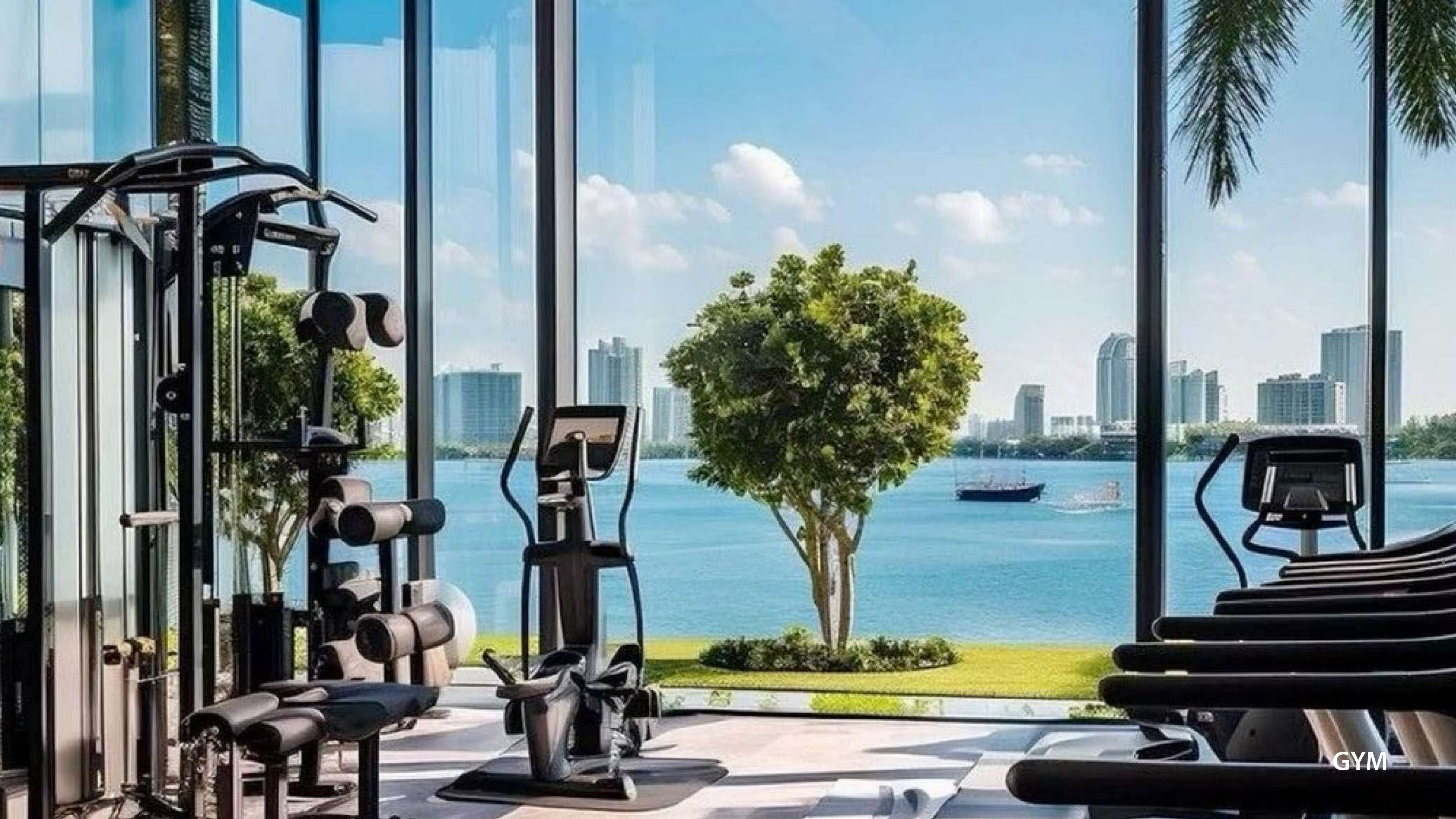
LIVING & DINING





kitchen





GYM





KIDS AREA



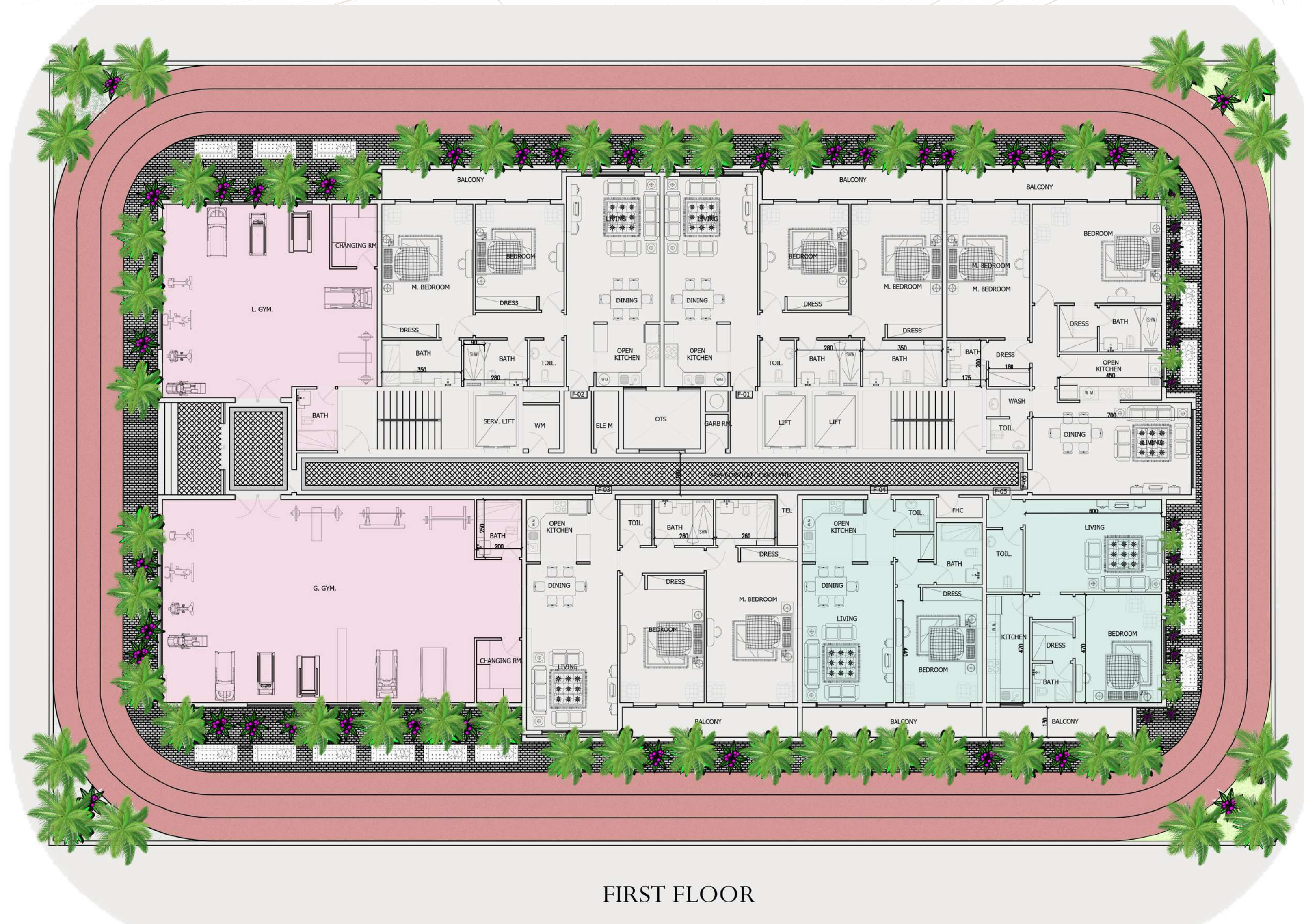


1 BHK APARTMENTS

2 BHK APARTMENTS

4 BHK PENTHOUSE

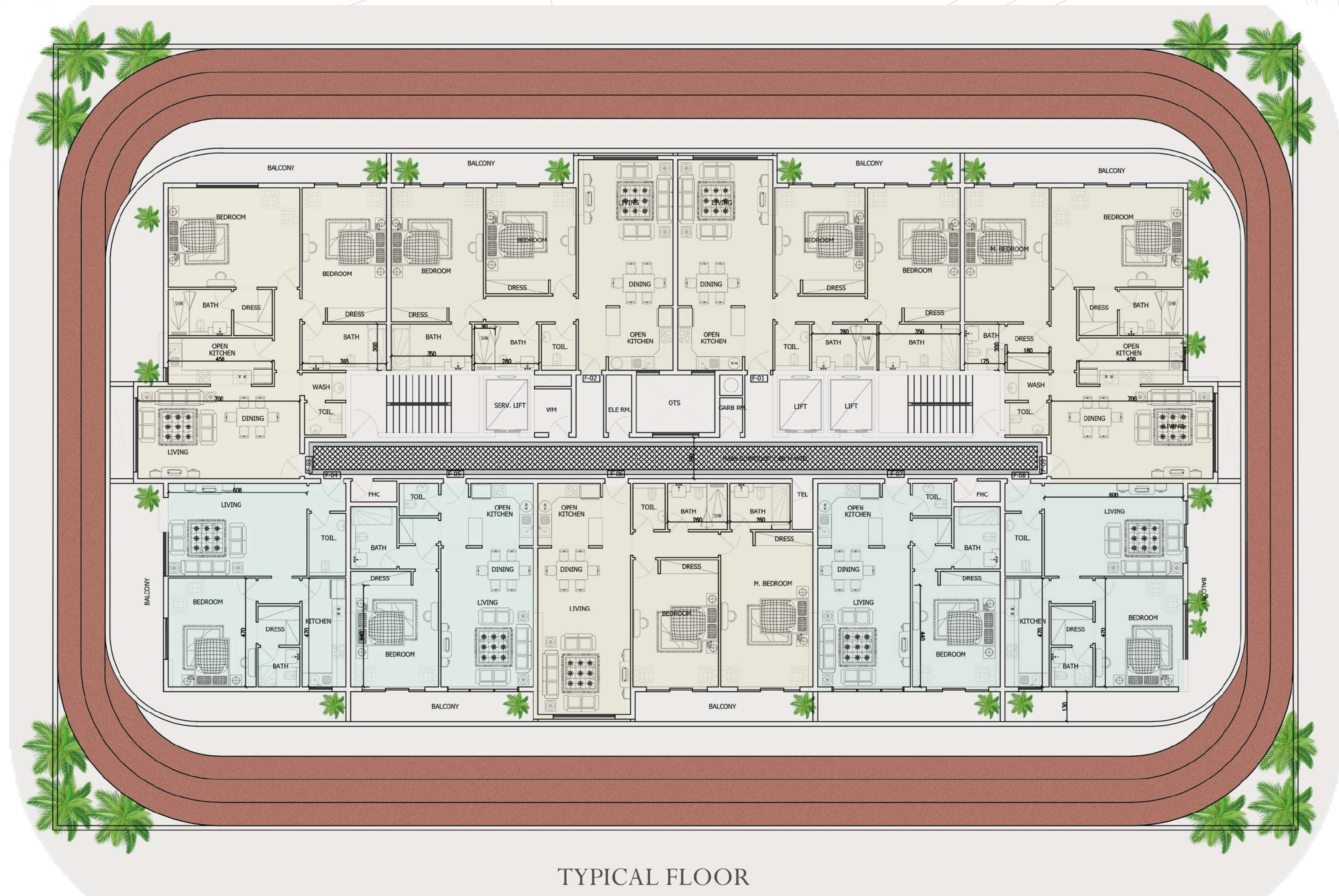




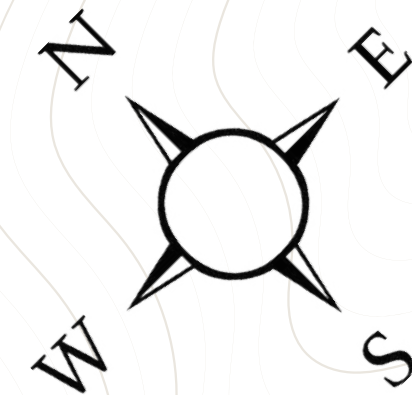
FIRST FLOOR

- 2 Bedroom
- 1 Bedrooms
- GYM
- Kids play area

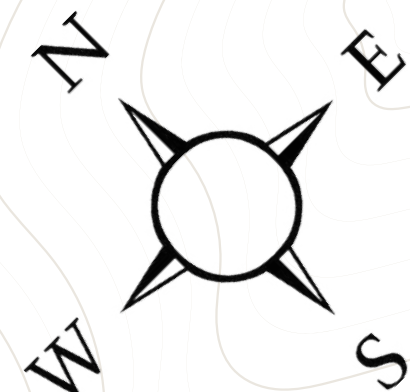
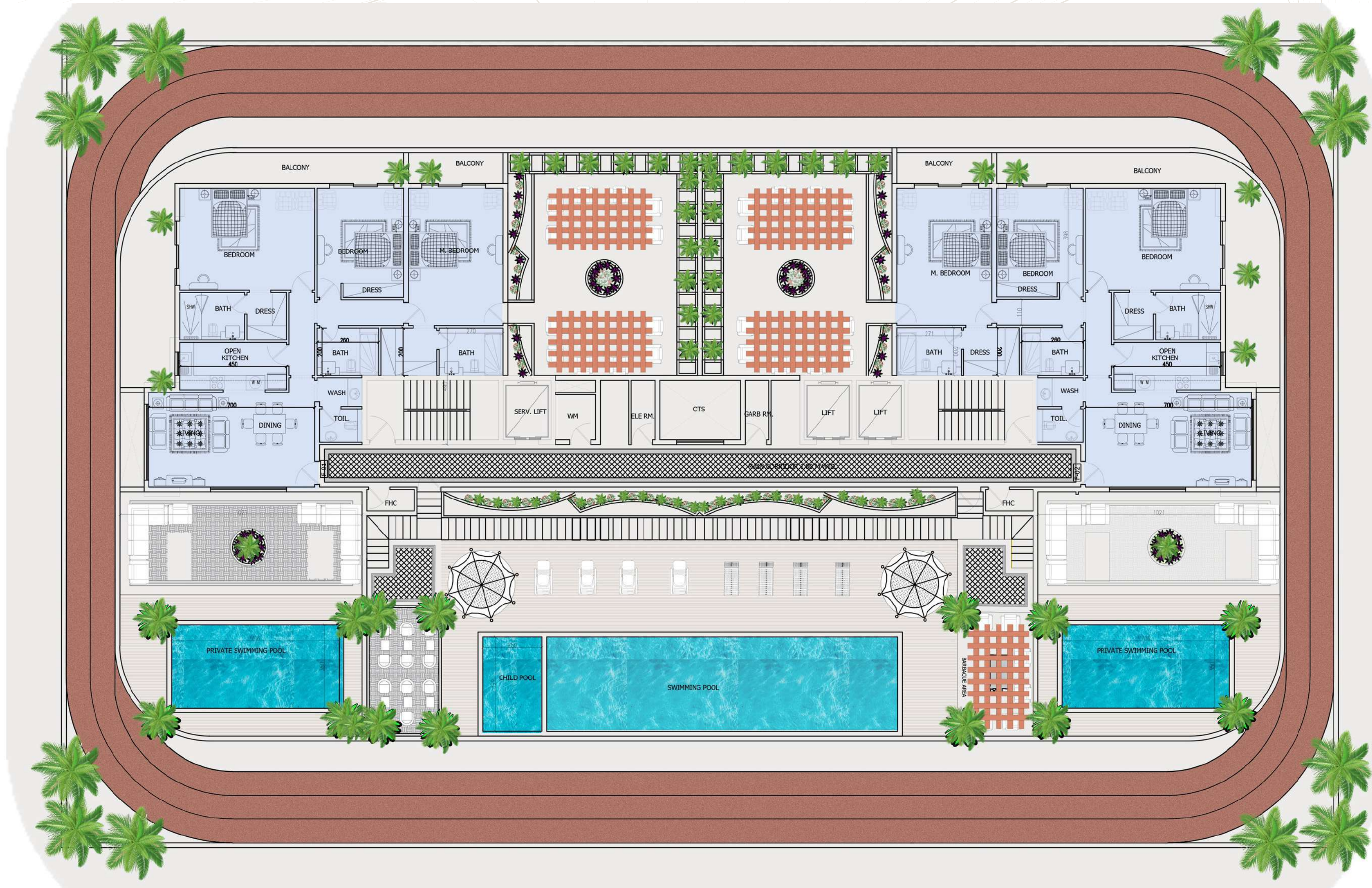




- 2 Bedroom
- 1 Bedrooms







- 4 Bedroom PentHouse
- Swimming pool





**1BHK LAYOUT**





**2BHK LAYOUT**





**4BHK LAYOUT**



# PAYMENT PLAN

**15% DOWN PAYMENT**

**15% AFTER 45 DAYS**

**5% AFTER 3 MONTHS**

**5% AFTER 3 MONTHS**

**10% AFTER 3 MONTHS**

**5% AFTER 3 MONTHS**

**5% AFTER 3 MONTHS**

**40% 40% ON COMPLETION**



# TARRAD

DEVELOPMENT

**Contact Us :**

**971 800 1551**

**www.tarrad.ae**

**info@saeedtarrad.ae**

STAY CONNECTED | @TarradDevelopment

